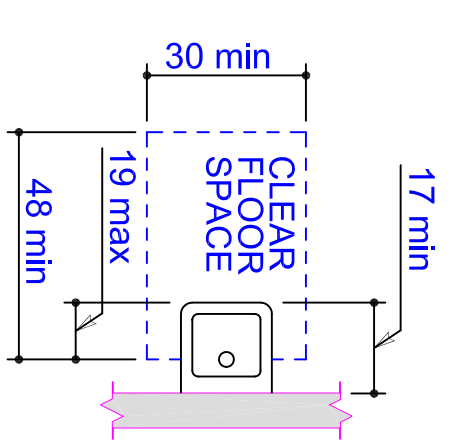


PLUS



PLUS

FIG. 25
DOOR REQUIREMENTS =
DOOR REQUIREMENTS

FACBC - 97 REQUIREMENTS
11.4.17.3 Size and Arrangement
EXCEPTION: New Construction

- (1) The standard accessible restroom stall contain an accessible lavatory within it, the size of such lavatory to be not less than 19 inches wide by 17 inches deep, nominal size, and wall mounted. The lavatory shall be mounted so as not to overlap the clear floor space areas required by Section 11.4.17 (see Fig. 30(a)) and to comply with Section 11.4.19 of the code. Such lavatories shall be counted as part of the required fixture count for the building.
- (2) The accessible water closet shall be located in the corner, diagonal to the door.

FLORENDA ACCESSIBLE
TOILET STALL IN
NEW CONSTRUCTION

COMPONENTS TO CREATE A FLORIDA
 ACCESSIBLE TOILET STALL
 IN NEW CONSTRUCTION